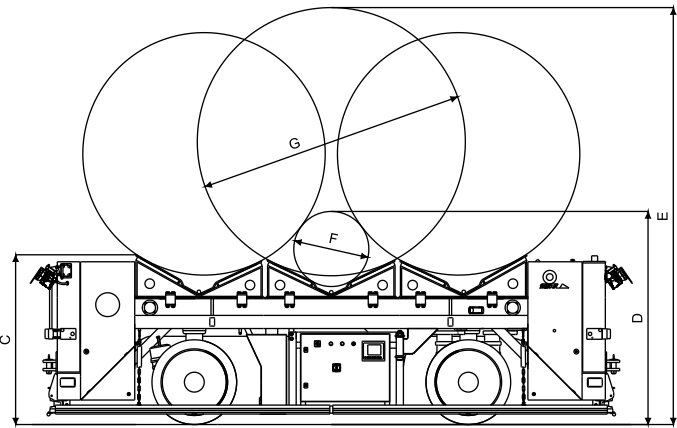
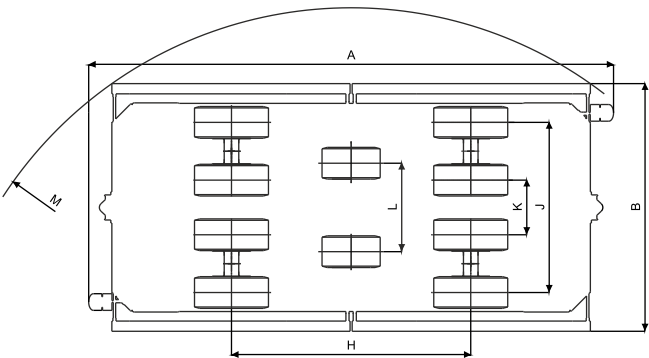


Technical Data
Standard Settings



Celler Str. 5
D - 31275 Lehrte

+49 (0) 51 36 - 80 96 -0
+49 (0) 51 36 - 80 96 -80

info@foxit.de
www.foxit.de

08/2014

Coiltransporter

THEO II

Engine

Manufacturer	John Deere
Type	4-cylinder-diesel-in-line engine, 4 stroke, lineal engine, water cooled
Power output	43.6 kW (59 HP) at 2,000 rpm according to DIN ISO 3046, intermittent operation
Torque	221 Nm at 1,600 rpm
Cubic Capacity	2,440 ccm
Working Voltage	24 V
Starter battery	140 Ah
Power supply battery	240 Ah Gel
Generator	2x 28V/80A
Starter	24V/3.0 kW
Air filter	Air filter with safety cartridge and electrical service switch
Diesel particulate filter	Closed system with active regeneration or exchange system

Drives

Fluent Hydrostatic Drive System	
System	Drive over two centrally under vehicle positioned wheels
Type	Axial-piston displacement pump and two radial pistons hydrostatic drives operating in a closed circuit. Traveling direction change via alteration in flow direction of the displacement pump
Filtering	Return-suction filter for the closed circuit
Control	Electrical flow volume displacement in conjunction with rotary speed-dependent hydraulic displacement
Speed	Up to 1 m per sec in both travelling directions

Chassis and Tyres

Steering/Carrying Axles	Four swing mounted steering axles each with two wheels, tyres 28x12x22
Drive Wheels	Two independent from each other hydraulically driven rocker axes with mono wheel, tyres 22x12x16

Brakes

Work Brakes	Hydrostatic drive system
Emergency Brakes	Pneumatic drum brakes on 4 wheels
Hand Brake	Pneumatic drum brakes on 4 Wheels

Hydraulic System

Hydraulic pump	Gear pump
Hydr. working pressure	Max. 180 bar
Filtering	Return filter

Filling Capacity

Fuel tank	300 l
Hydraulic System	80 l

Weight

Own weight Tare	9,200 kg
Payload	44,000 kg

Dimensions

A	Length	5,050 mm
B	Width	2,400 mm
C	Height without load	1,400 mm
D	Height with min. Coil-ø	approx. 1,800 mm
E	Height with max. Coil-ø	approx. 3,500 mm
F	min. Coil-ø	630 mm
G	max. Coil-ø	2,250 mm
H	Axle distance	2,300 mm
J	Axle width Outer	1,635 mm
K	Axle width inner	525 mm
L	Axle width Drive wheels	850 mm
M	Minimum Cornering radius	4,000 mm

User Interface

Manual Control	Radio remote control
Recovery	Control console
Automatic control	PC Connection via small band radio
	Radio-Lan-connection via vehicle's own PC
Service interface	Engine control (control display in control cabinet), data logging on vehicles own PC (optional)
Loading clamp	Via independent radio controlled safety switch, clamping switch fitted to vehicle chassis, signal lamps on vehicles

Track Guidance

Integrated track guidance controller	
Transponder, odometrical sensors, pulse counter	

Object recognition

Personal Protection	Safety approved laser scanner in both travelling directions, emergency stop switches on all 4 corners and emergency stop bars on each side
Equipment protection	Ultra sound system in both travelling directions, emergency stop contact bars on each side



Driverless, 44 t Payload, Diesel



Maintenance-Friendly Construction



Engine



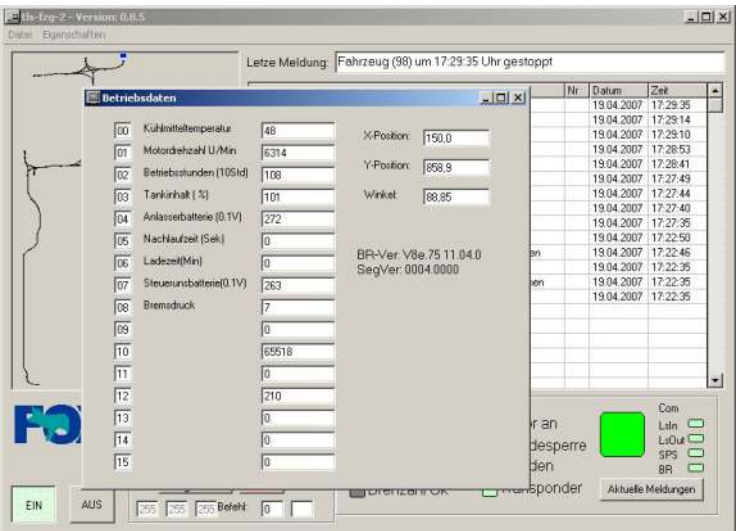
Electric control cabinet

For high efficient transport

Driverless Coiltransporter THEO II

- 44 t payload
3 coilbeds
- 40 kW diesel drive
No refuel in mulitple-shift operation
- Solid and flexible
Four-wheel steering, 4 m cornering radius

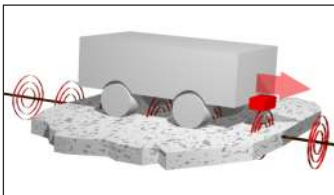
Operational Data



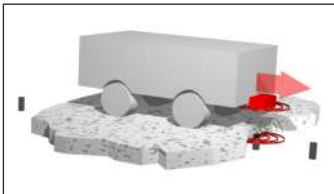
Display of status messages and status indications on vehicle and control station

Track Guidance Systems

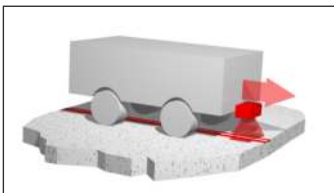
Different technologies are available:



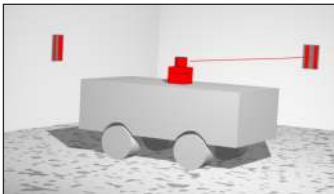
Guide wire



Transponder



Camera



Laser scanner



Flexible Routing

Integration in existing facilities / plants

