

## Camera For Optical Line Tracker

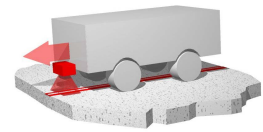
HG 73841-B

### Operation

The camera HG 73841YB described in this data sheet is part of an Optical Guidance System for Automated Guided Vehicles (AGV) that steers along a contrast line.

This camera supplies the video information for the Optical Line Tracker HG 73840 and may be directly connected.

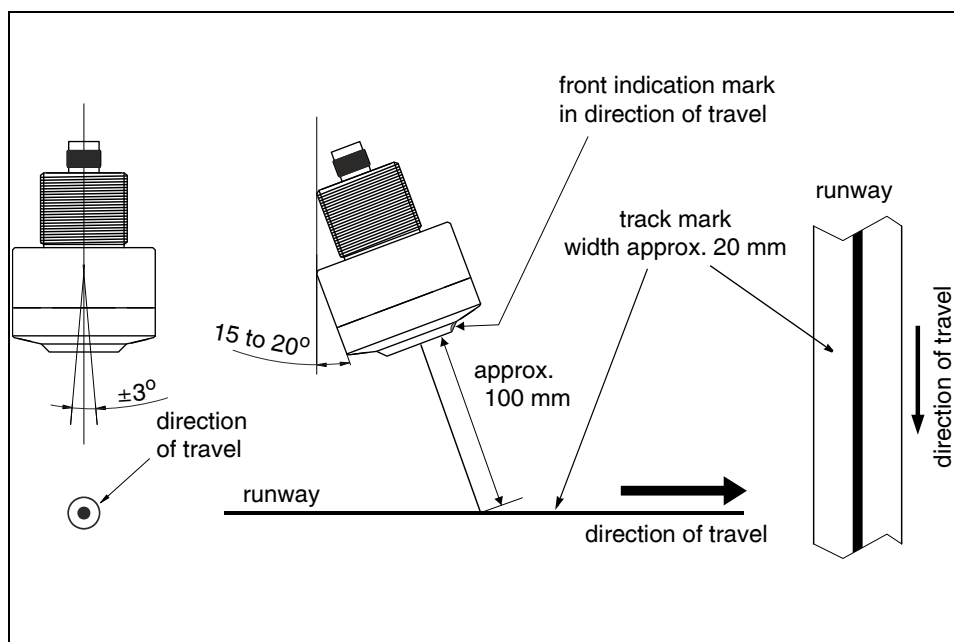
The used model of the camera may cause offset errors. For compensation, the camera holder should have the ability to pivot by  $\pm 3^\circ$ .



- ♦ compact structure
- ♦ standard video output
- ♦ integrated LED lighting
- ♦ M30 casing
- ♦ automatic exposure



### Installation / Mounting

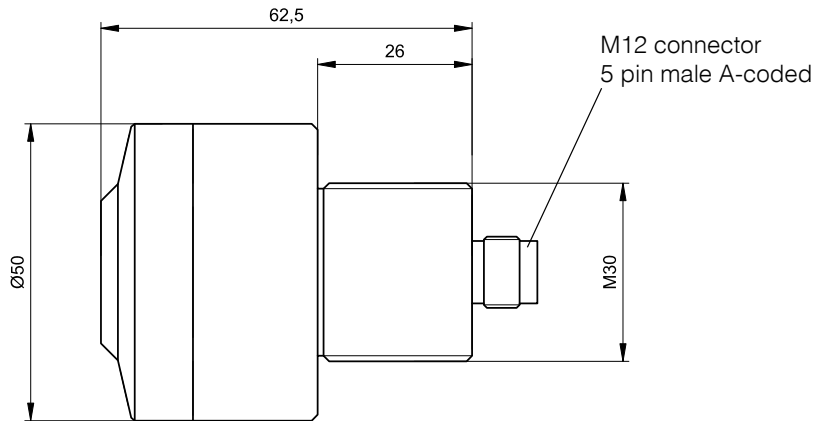


# Camera For Optical Line Tracker

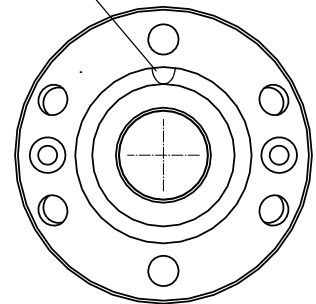
HG 73841-B

## Casing Dimensions

### Variant YB (preferred alternative)

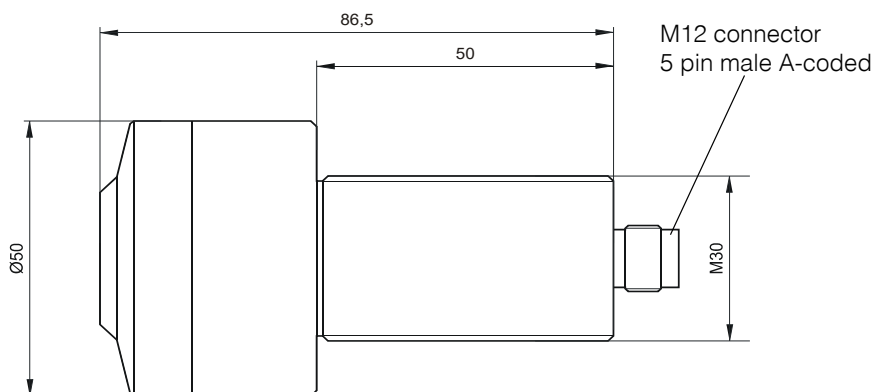


Front indication mark  
in direction of travel



Valid for both variants

### Variant ZB (for legacy projects)



## Pin Allocations

Pin	Signal
1	Video Out
2	LEDs off
3	+12 V
4	GND
5	---

Valid for both variants

## Technical Data

- Casing dimensions	refer to drawing above
- Operating voltage	12 V
- Current consumption	120 mA @ 12 V
- Switch LEDs off	9 to 36 VDC at Pin 2
- Temperature range	0 to +50° C
- Protection class	IP53
- Output signal	composite video (black/white) 1 V <sub>pp</sub> at 75 $\Omega$
- Opening angle	60° rectangular to direction of travel, corresponding 120 mm at 100 mm mounting height
- Offset error	max. $\pm 5$ mm at 100 mm mounting height